



## Portable Ramps Installation & Owner's Manual



**Warning: Read and understand all instructions before using.**



## IMPORTANT INFORMATION

### **Read and Understand Prior to Using Ramp**

Harmar ramps are designed to improve access over short heights for wheelchairs, power chairs, and scooters. They are rated at 800 lbs. capacity based on double axle, evenly distributed loads. For your safety, a caregiver or aide should be present at all times when using any ramp.

For safe loading and unloading, it's essential to set up the ramp properly. Ensure that the hook (top end) is pressed firmly against the step or platform before using. Failure to do so may result in the ramp slipping off the step while

occupied. When possible, use steel pins provided to lock the ramp in place.

Although Harmar portable ramps are lightweight, use safe lifting practices when lifting. For folding and unfolding instructions, refer to the diagram found next to the handle on the ramp.

### **Choosing a Safe Ramp Length**

Harmar strongly recommends that users never exceed a 1-inch rise to 1-foot length ratio for the ramp's slope.

Example: If your step or platform rises 6 inches then the ramp must be 6 feet long.

This ensures that the slope to reach the height required will be appropriate and safe.

**Harmar is committed to offering the highest quality access ramps on the market today.**

**Your safety is important to us so please read and follow all information in this manual and on your ramp.**

# SAFETY

**Have a qualified assistant** present when using this or any other portable ramp

**Ensure the top of the ramp is secure.** The top where the ramp sits on the step or landing must be secure before using. It may be necessary to anchor the top of ramp to the landing surface with the steel pins provided.

**Follow all chair or scooter manufacturer recommendations** for your specific mobility device.

**NEVER exceed a slope greater than 1-inch rise to 1-foot length**

## How to Unfold a Harmar Multi-Fold Ramp

### Step 1

Place the ramp approximately at its length out from the step, van, or platform.

Stand the ramp up on end with the open ends down and the handle side toward you.

Reach down and lift the first half of the ramp toward the step or landing area and set it down on top of the support.

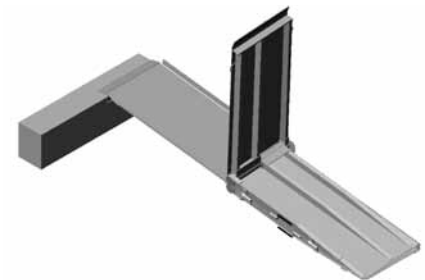
Press the hook firmly against the step.



---

### Step 2

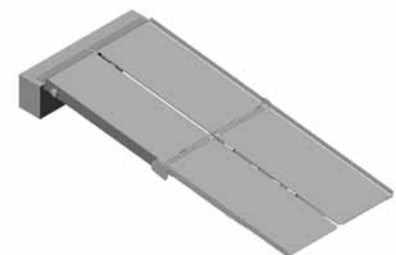
Open top half of ramp.



---

### Step 3

Unfold top half of ramp towards you and again ensure that the ramp hooks are pressed firmly against the landing area.





# RAMP THREE YEAR WARRANTY CERTIFICATE

## PLEASE FILL OUT ALL FIELDS AND RETURN WITHIN TEN (10) DAYS OF PRODUCT PURCHASE.

Fax completed form to 1-866-234-5680 or mail to Harmar, ATTN Warranty Department, 2075 47th Street, Sarasota Florida 34234. Harmar warrants to the original purchaser of a ramp manufactured by us to be free from defects in material and workmanship for a 3-year period on all component parts of the ramps.

### EXCEPTIONS TO THIS LIMITED WARRANTY ARE:

- Damage resulting from improper installation or operation
- Negligence, alterations, abuse or misuse of the equipment
- Fire, flood, acts of God
- Shipping damage
- Parts used that are not supplied by Harmar
- Labor fees for installation work or service calls

No warranty is extended, express or implied, whether of merchantability or fitness for a particular purpose, after expiration of 3 years from the date of original purchase of the unit. Harmar and its dealers shall not be liable for any consequential, special or incidental damages arising out of the purchase or use of the unit or resulting from the breach of this Limited Warranty, or any implied warranty. The limit of liability of Harmar and its dealer hereunder shall be the unit's purchase price. Some states do not allow limitations on how long an implied warranty lasts or the exclusion or limitation of incidental or consequential damages, or legal remedies, so these above limitations may not apply to you. All warranty claims must be reported to the dealer from whom the ramp was purchased as they have responsibility for handling your warranty claim. The dealer is to contact the Service Department of Harmar and provide the serial number of the ramp along with a description of the events leading to the warranty claim. Dealers may charge for labor, service, travel, or other associated costs to make repairs, and such charges are not covered by this Limited Warranty. It is permissible to have any repairs or replacement work done as a result of any defects in material and workmanship by someone other than the Dealer under this Limited Warranty. However, the Limited Warranty does not cover any charges or expenses assessed by any such other person or company performing such repairs or replacement work. All parts used to replace defective materials must be genuine Harmar parts to be covered by this Limited Warranty. This Limited Warranty gives you specific legal rights, and you may have other rights which vary from state to state.

### PRODUCT INFORMATION

Model: \_\_\_\_\_  
 Part Number: \_\_\_\_\_  
 Purchase Date: \_\_\_\_\_

### DEALER/INSTALLER INFORMATION

Company Name: \_\_\_\_\_  
 Contact Name: \_\_\_\_\_  
 Address: \_\_\_\_\_  
 \_\_\_\_\_  
 \_\_\_\_\_  
 Phone: \_\_\_\_\_  
 Fax: \_\_\_\_\_  
 Email: \_\_\_\_\_

### PURCHASER INFORMATION

Name: \_\_\_\_\_  
 Address: \_\_\_\_\_  
 \_\_\_\_\_  
 \_\_\_\_\_  
 Phone: \_\_\_\_\_  
 Email: \_\_\_\_\_

### ADDITIONAL INFORMATION

**How did you hear about Harmar?**  
 Harmar Dealer       Friend or Acquaintance  
 Internet             Saw Harmar product somewhere  
 Magazine             Other \_\_\_\_\_  
 Which \_\_\_\_\_

**Do you have internet access?**  Yes  No

**I purchased my Harmar ramp because of?**  
 Style/Appearance       Ease of Use  
 Harmar Representative    Recommendation  
 Previous Experience       Price/Value